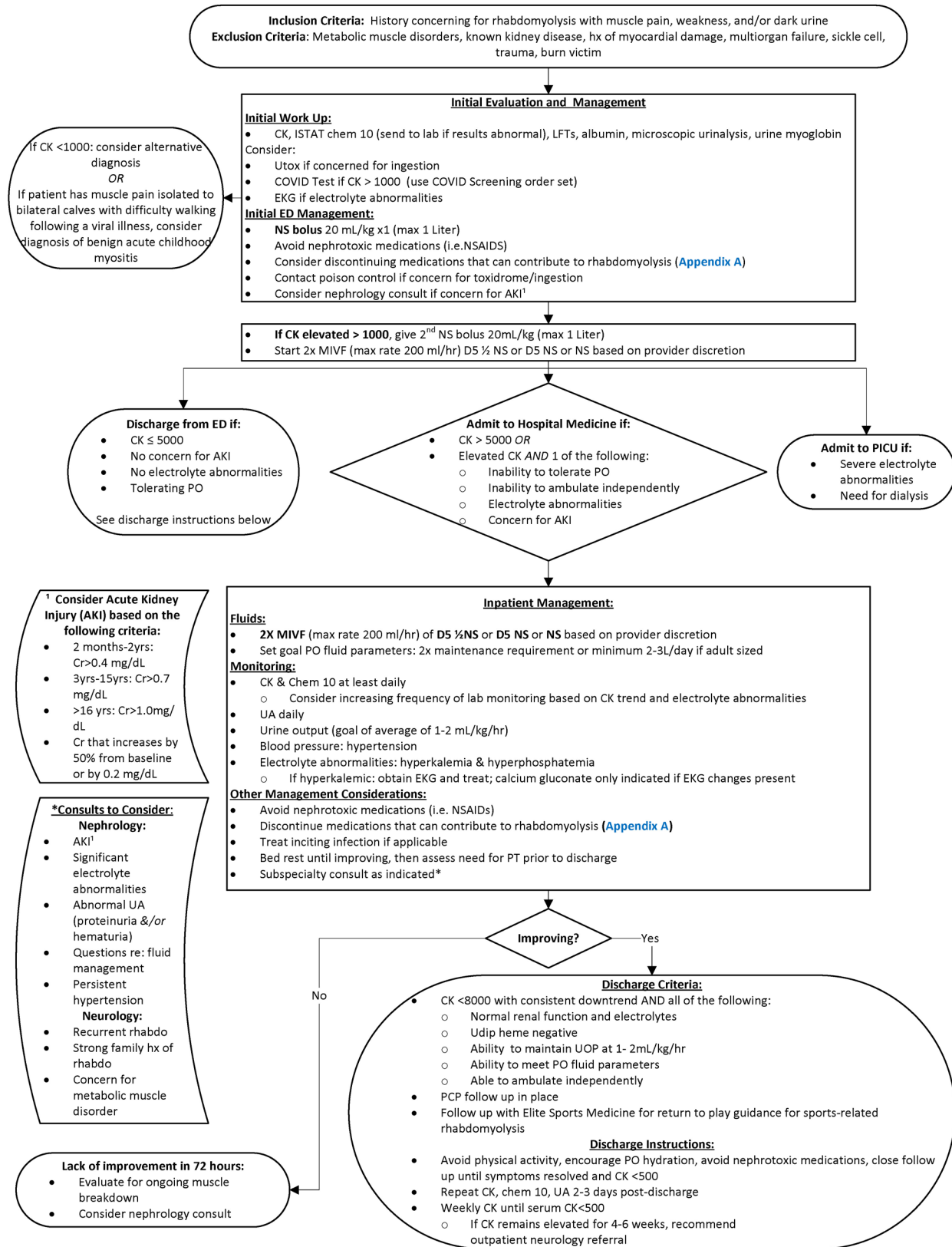


CLINICAL PATHWAY: Rhabdomyolysis

THIS PATHWAY
SERVES AS A GUIDE
AND DOES NOT
REPLACE CLINICAL
JUDGMENT.



CONTACTS: NOAH JABLOW, MD | HAYLEY WOLFGRUBER, MD | ROBYN MATLOFF, MD

LAST UPDATED: 10.19.23

Anti-arrhythmic:

- Amiodarone
- Diltiazem

Anti-infectives:

- Amoxicillin
- Amphotericin-B
- Azithromycin
- Cefaclor
- Cefdinir
- Clarithromycin
- Daptomycin
- Erythromycin
- Fluconazole
- Fluoroquinolones (e.g. ciprofloxacin, gemifloxacin, levofloxacin, moxifloxacin, ofloxacin)
- Ganciclovir
- Linezolid
- Meropenem
- Trimethoprim-sulfamethoxazole
- Zosyn
- Antiretrovirals (e.g. abacavir, lamivudine, zidovudine, tenofovir, raltegravir, efavirenz, emtricitabine)

Anti-Lipemics:

- Atorvastatin
- Ezetimibe
- Fenofibrate
- Fluvastatin
- Gemfibrozil
- Lovastatin
- Pitavastatin
- Pravastatin
- Rosuvastatin
- Simvastatin

Anesthetics/Pain**Control/Paralytic:**

- Acetaminophen
- Diclofenac
- Fentanyl
- Methadone
- Morphine
- Propofol
- Succinylcholine
- Rocuronium

Anti-hypertensive

- Amlodipine
- Candesartan
- Losartan
- Ramipril

Immunosuppressants

- Cyclosporine

Neuro/Psychiatric Medications

- Aripiprazole
- Citalopram
- Clozapine
- Escitalopram
- Haloperidol
- Lamotrigine
- Olanzapine
- Paroxetine
- Pregabalin
- Quetiapine
- Risperidone
- Sertraline
- Valproate
- Venlafaxine

Miscellaneous:

- Amphetamines
- Clopidogrel
- Colchicine
- Desmopressin Acetate
- Dextroamphetamine
- Furosemide
- Insulin
- Metformin
- Omeprazole

The following medications are linked to rhabdomyolysis in small, isolated case reports.

Clinical discretion is advised.

- Atomoxetine
- Caffeine
- Calcium carbonate
- Carbamazepine
- Chorionic gonadotrophin
- Eptacog alpha
- Filgrastim
- Fluticasone
- Ganciclovir
- Itraconazole
- Montelukast
- Mycophenolate
- Oseltamivir
- Tacrolimus
- Vecuronium

Please reference Lexi-Comp or other drug reference source for additional medications that may have a risk for rhabdomyolysis.