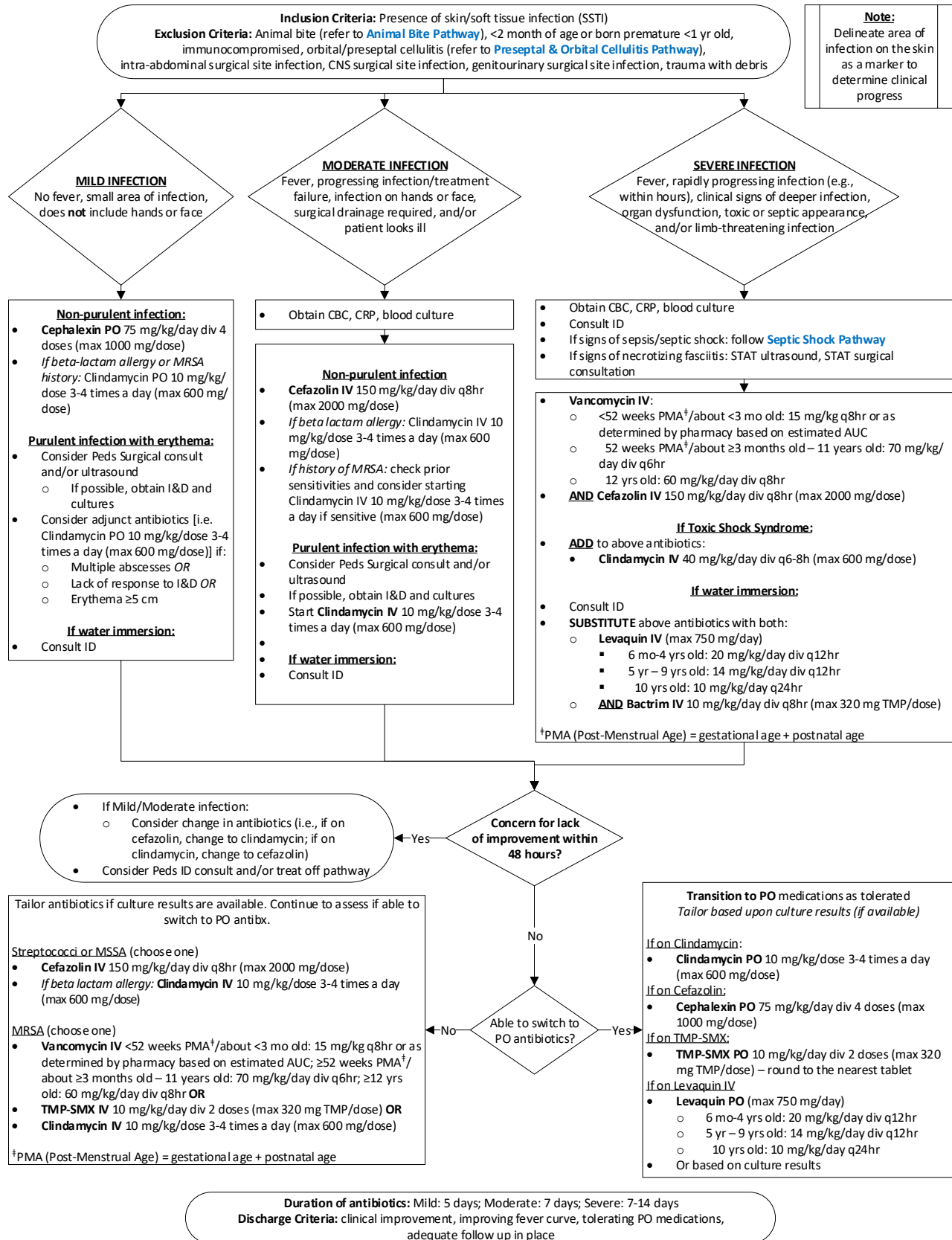


CLINICAL PATHWAY: Skin and Soft Tissue Infections (SSTI)

THIS PATHWAY
SERVES AS A GUIDE
AND DOES NOT
REPLACE CLINICAL
JUDGMENT.



CONTACTS: HASSAN EL CHEBIB, MD | GRACE HONG, APRN | JENNIFER GIROTTO, PHARM D

LAST UPDATED: 02.01.21