



North Hartford Ascend Pipeline

Funded by the U.S. Department of Education

August 25, 2022



North Hartford
Ascend Pipeline



This meeting is being recorded and the recording will be posted on the Connecticut Children's website.

Agenda

- Welcome
- Ascend Partner Employment Opportunities
- Overview of Ascend
- Partner Spotlight: Hartford Public Schools
- Ascend Governance Update
- Marketing and Communications Firm
- Breakout Discussions
- Question and Answer
- Next Steps and Closing Remarks

Ascend Partner Employment Opportunities

- Connecticut Children's, Ascend Program Coordinator
 - [Career Site - Self Service \(adp.com\)](#)
- San Juan Center, Real Estate Development Manager
 - [San Juan Center, Inc. \(constantcontact.com\)](#)
- Hartford Public School Bus Drivers, Autumn Transportation
 - [JOBS \(autumntransportation.com\)](#)

Partner Events



Sat. Sep 10
11am-2pm

Parker Memorial
2621 Main St,
Hartford, CT 06120

Nutritious Snacks

THE ACTIVITIES
Scavenger Hunt
Arts & Crafts
Interactive Tablets
Singing & Dancing

FAMILY EVENT
ALL AGES WELCOMED

Please scan &
Register
First 20 will get a
prize



Raffles and Food
trucks

FREE Train Ride



Sábado, 10 de Septiembre
11am-2pm

Parker Memorial
2621 Main St,
Hartford, CT 06120

Meriendas Nutritivas

LAS ACTIVIDADES
Búsqueda de tesoros
Arte y Artesanía
Tabletas interactivas
Bailando cantando

EVENTO FAMILIAR
TODAS LAS EDADES SON BIENVENIDAS

Escanee y registre
Los primeros 20
tendrán premio



Rifas y Camiones de comida

Paseos en tren es gratis

North Hartford Ascend Pipeline

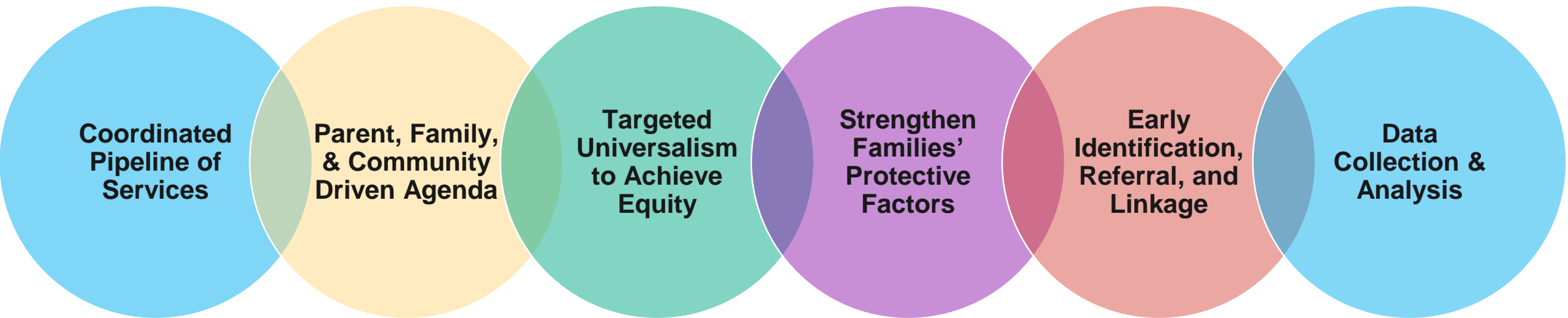
Why are we here?

To collaboratively build an integrated and coordinated pipeline of services and supports that helps children and families reach their full potential.

North Hartford Ascend Pipeline (Ascend)



Place-based initiative that integrates achievement-oriented schools and vital, evidence-based social and community services within a networked prenatal through career pipeline.



U.S. DOE Promise Neighborhoods Program Results

Students

Enter kindergarten ready to succeed in school.

Are proficient in Math and English Language Arts.

Successfully transition from middle to high school.

Graduate from high school.

Obtain post-secondary degrees, certifications, or credentials.

Are supported by families and communities in their learning.

Are healthy.

Feel safe at school and in the community.

Live in stable communities.

Have access to 21st century learning tools.

Partner Spotlight:

Hartford Public Schools



FIRST DAY OF SCHOOL
AUGUST 29



COME TO SCHOOL! WIN PRIZES!



Attend everyday of the first week of school to be entered into a raffle for great prizes!

Win a Backpack full of Gifts!

Schools with the highest Day 1 attendance win a field trip of their choice!



**FIRST DAY OF SCHOOL
AUGUST 29, 2022**

**IT ALL STARTS ON DAY ONE.
ATTENDANCE MATTERS.**

HartfordSchools.org/AttendanceMatters



¡VEN A LA ESCUELA! ¡GANA PREMIOS!



¡Asista todos los días de la primera semana de clases y serás inscrito en una rifa para recibir premios emocionantes!

Gana una Mochila llena de regalos

¡Escuelas con la asistencia más alta en el Día Uno ganarán una excursión de su elección!



**LAS CLASES COMIENZAN
29 DE AGOSTO DE 2022**

**TODO COMIENZA DESDE EL DIA UNO
LA ASISTENCIA ES IMPORTANTE.**

HartfordSchools.org/AttendanceMatters



 **HARTFORD PUBLIC SCHOOLS**
Office of Family & Community Partnerships

The Office of Family and Community Partnerships collaborates with families and community partners to promote and advance student success.

Hartford Public Schools' Family and Community Partnerships Engagement Theory of Action (ToA) is:

- IF** family and community engagement is a shared responsibility between all adults in and beyond school, and...
- IF** those adults are committed to building and enhancing their skills, knowledge and mindsets related to engagement and partnerships, and...
- IF** schools, families and communities engage in productive, mutually respectful partnerships, and...
- IF** those partnerships focus on achieving the district's goals...

THEN

family and community engagement will be a meaningful contributor to increased student performance, greater overall social emotional wellness, improved schools, and students who are prepared for participation in a global economy.

At Hartford Public Schools, family engagement is defined as a full, equal, and equitable partnership among families, educators and community partners to promote children's learning and development from birth through college and career. (CT, CSDE)

 **HARTFORD PUBLIC SCHOOLS**
Office of Family & Community Partnerships

Teoría de acción de las asociaciones familiares y comunitarias (participación)

La Teoría de Acción (ToA) de las Asociaciones Familiares y Comunitarias de las Escuelas Públicas de Hartford es:

- SI** la participación de la familia y la comunidad es una responsabilidad compartida entre todos los adultos dentro y fuera de la escuela, y...
- SI** esos adultos están comprometidos a desarrollar y mejorar sus habilidades, conocimientos y mentalidades relacionadas con el compromiso y las asociaciones, y...
- SI** las escuelas, las familias y las comunidades se involucran en asociaciones productivas y mutuamente respetuosas, y...
- SI** esas asociaciones se enfocan en lograr las metas del distrito...

ENTONCES

la participación de la familia y la comunidad contribuirá significativamente a un mayor rendimiento de los estudiantes, un mayor bienestar social y emocional en general, mejores escuelas y estudiantes que están preparados para participar en una economía global.

En las escuelas públicas de Hartford, la participación familiar se define como una asociación plena, y equitativa entre familias, educadores y socios comunitarios para promover el aprendizaje y el desarrollo de los niños desde el nacimiento hasta la universidad y la carrera. (CT, CSDE)

**Hartford Public Schools
NEEDS YOU!**



Get Involved
in your child's education.

Join the PTO, SGC,
or volunteer!



Sign up now!

hartfordschools.org/FamiliesLead



**¡Escuelas Públicas de Hartford
TE NECESITA!**



Involúcrese
en la educación de su hijo(a).

¡Únase al PTO, SGC
o conviértase en
voluntario(a)!



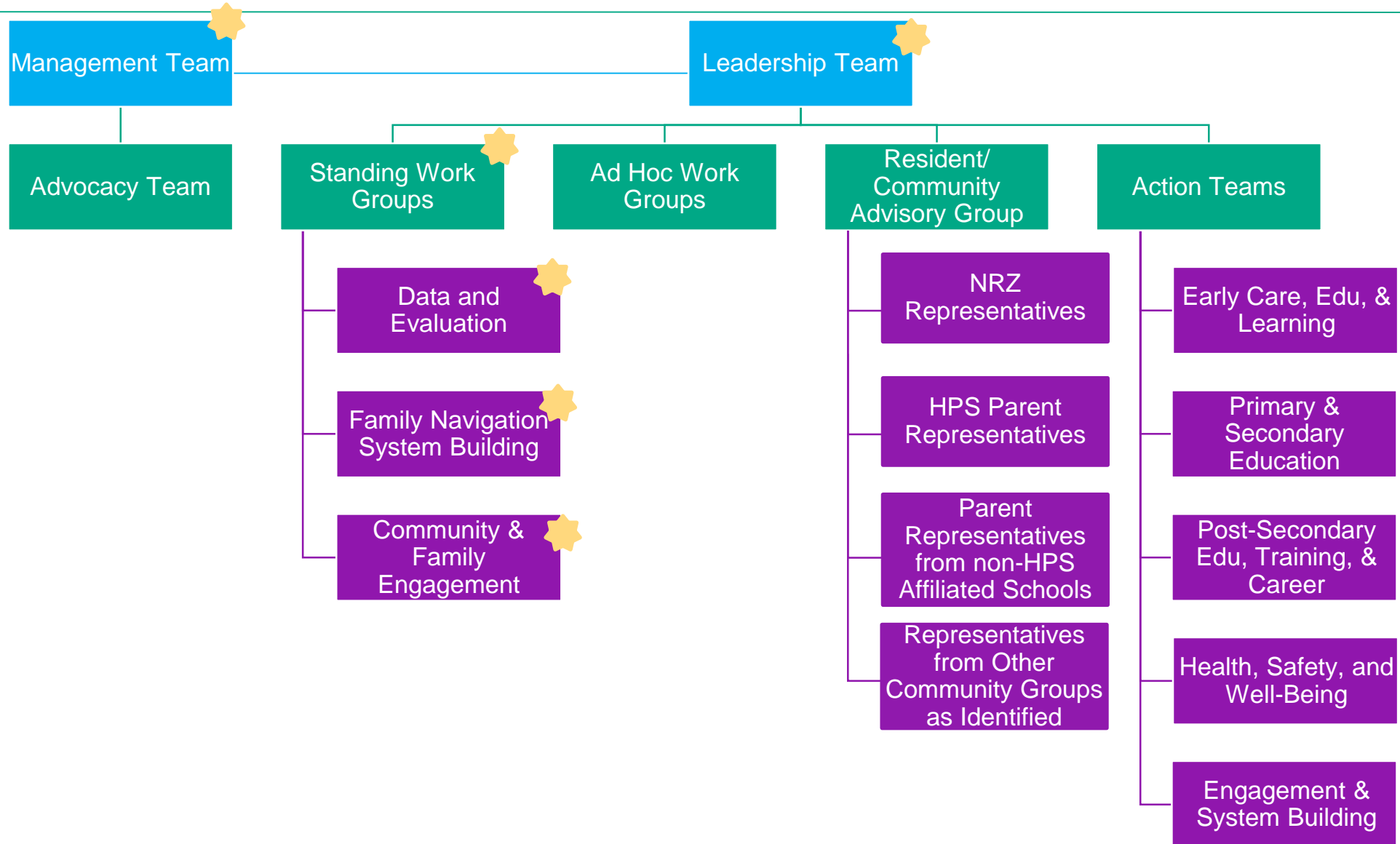
¡Inscríbese ahora!

hartfordschools.org/FamiliesLead



Ascend Governance Update

Governance Update



Community Representatives

- Community & Family Engagement Work Group
 - Tori Hamilton
 - Reynardo Ortiz
 - Stephan Palmer
 - Sylvester Turner Jr
- Data & Evaluation Work Group
 - Tyler Napper
 - Shelby Williams
- Family Navigation Work Group
 - Patricia Dixon
 - Minervia Newman
- Leadership Team
 - Gloria Jenkins
 - Terry Stringer
- Management Team
 - Tyasha Adams
 - Tennicha Frater-Chin
 - Kimberly Harris-Eaton

Resident and Community Advisory Group

Co-Hosts: Michelle Safo Agyeman, Ascend Program Manager & Luz Holmes, Ascend Community Partner

- Upper Albany NRZ
 - Yacheka Dickenson
 - Lawrence Williams
- Northeast NRZ
 - Darlene Childs
 - Helen Nixon
 - Charles Teale
- Clay Arsenal NRZ
 - Jeffrey Stewart
- MLK Middle School, Weaver High School
 - Beverly Hines
- S.A.N.D. Elementary School
 - Abigail Ocasio
- West Middle School
 - Yarimar Melendez
- Hartford Public Schools
 - Brittany Grant

Marketing and Communications Firm: FourteenG & Colored Hemisphere

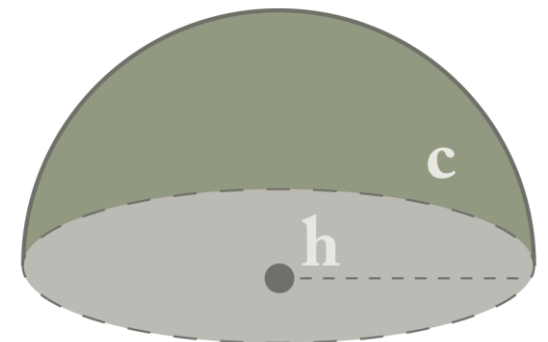
FourteenG exists to help companies emphasize their visions by elevating their brand. We imagine, design and build experiences that connect people with brands in real life.
Your Vision Amplified

- Gary S., Chief Technical Officer
- Michael S., Chief Design Officer
- Daniel G., Director of Strategy
- Desiree J., Project Manager
- Maria S., Marketing Strategist



Colored Hemisphere provides equity-based consultation services to improve the quality of service administered by proposed legislation, programs, or community service institution(s) designed to improve the quality of life for disenfranchised communities of color.

Shelby Michelle Williams, Founder



Year 1 Activities

Digital Marketing Tools - website and social media channels

Canvassing - September

Communication Focus Groups - September

Discussion Questions

1. What do families need this year to have a successful school year?
2. What are families looking forward to? What are some pressure points?
3. How can Ascend Community Conversations be a support to families?

Ground Rules for Breakouts

- Everyone deserves to be heard and everyone should have an opportunity to speak.
 - Online: Keep your camera on (if possible), and keep your mic muted unless you are speaking.
- Listen and respond respectfully.
- Stick to the question – time is limited, so let's value each other's time.
- Respect each other's privacy – keep personal stories in the group.
- Successful dialogue is the responsibility of all participants
- Is there anything we need to add?

Report Out

Thank YOU!

Upcoming meetings:

Thursday, September 29, 2022

- An incentive is available to Hartford community members participating in this meeting.
 - The link is posted in the chat and will be sent out via email.
- Please take the Post Meeting Survey to share your thoughts and feedback.
 - The link is posted in the chat and will be sent out via email.
- Contact Gina Federico, gfederico@unitedwayinc.org or (860) 493-1115, with any questions.